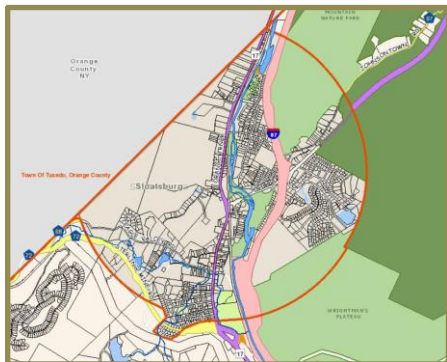




“When Main Street is a State Highway”

Date: Wednesday, October 25, 2017 **Location:** Rockland Community College
Time: 7:00 – 9:00 PM Technology Center, The Ellipse, 145 College Road
Suffern, NY 10901

This educational session is the fifth event that is being planned as part of the “A Year of Transportation” program, a year-long series of presentations and workshops aimed at Rockland’s transportation needs. This fifth session, comprised of panelists Carl Wright, Mayor of the Village of Sloatsburg; Sandra Jobson, Route 17 Sloatsburg Complete Streets Project Manager for NYSDOT; Peter Akey, Deputy Mayor of the Village of Sloatsburg; and Darrell Frasier, member of the Village of Sloatsburg Beautification Committee, will address how the development of transportation projects on segments of state highway considered *Main Street* require a special approach. This approach moves away from a standard driven process, toward a more flexible, community-friendly approach, that seeks to balance performance and efficiency with safety and quality of life – for all users of every ability.



In the past, the consequences of transportation projects on communities has often been ignored or introduced near the end of the project’s development, reducing them to reactive considerations at best. Today, transportation professionals understand that involving the public early and meaningfully can result in a *Main Street* that is not only efficient and safe but enhances the vibrancy of the community, economically and socially.

The Route 17 Sloatsburg Complete Streets project is a recent example of how transportation professionals, municipal officials, and the public can work together to develop a balanced *Main Street* project that respects the local community while still meeting regional needs.

Mayor Carl Wright, Peter Akey, Darrell Frasier will discuss the implications of a state owned *Main Street* on the ability of local officials to determine the future of these corridors, since the regional and local transportation goals don’t always match.

Sandra Jobson will describe the public involvement approach used by NYSDOT in the development of *Main Street* projects, using the Route 17 Sloatsburg Complete Streets project as a case study.

Attendance at this **FREE** event will count **1.5 to 2 hours** towards the State-mandated four-hour annual requirements Planning and Zoning Board of Appeals members.



Please see below for directions to Rockland Community College.

RSVP to Arlene Miller millera@co.rockland.ny.us; (845) 364-3448

Directions to the Rockland Community College 145 College Road, Suffern, NY 10901

From the east/west:

Take the New York State Thruway to Airmont Road, Exit 14B. At the end of the ramp, turn onto Airmont Road (right if coming from the east/south; left if coming from the west/north). Continue on Airmont Road, crossing Spook Rock Road (Airmont Road becomes Highview Road). Turn left onto College Road. Follow College Road, and turn left onto the campus at the main entrance.

From the south:

Take the Palisades Interstate Parkway or the Garden State Parkway Extension to the New York State Thruway, westbound. Take Exit 14B, Airmont Road. Follow the remaining directions from above.

From the north:

Take Route 202 west/south past the Palisades Interstate Parkway. Turn left at the 3rd traffic light onto Route 306. Turn right at the 3rd traffic light onto Viola Road. Turn left at the next traffic light onto College Road. The campus entrance is on the right.

